

# Drip Trap Electrically Actuated

## MODEL #8490

### OVERVIEW

The GROTH BIOGAS Model 8490 Electrically Actuated Drip Trap combines the reliability of a rotating disc manual drip trap with the convenience of an automatic drip trap. It can be controlled by an integral cycle timer, a remote sequence controller, or the owner's master control system. The GROTH BIOGAS Model 8490 is an electrically operated drip trap design for pressures up to 60 psig.

### TECHNICAL DETAILS

- Size: Standard with 1" NPT connection
- Material: Aluminum body with Stainless Steel internal working parts
- NEMA 4/4X Class I Div I C&D actuator housing
- Maximum working pressure of 5 psig to 60 psig
- Capacity of 3 or 6 Quarts

### FEATURES

- Powerful, reliable shut-off action
- Heavy duty electric actuator
- Visual position indicator
- Electronic contacts for remote position indication
- Override for manual operation
- No gas escapes when draining

### OPTIONS

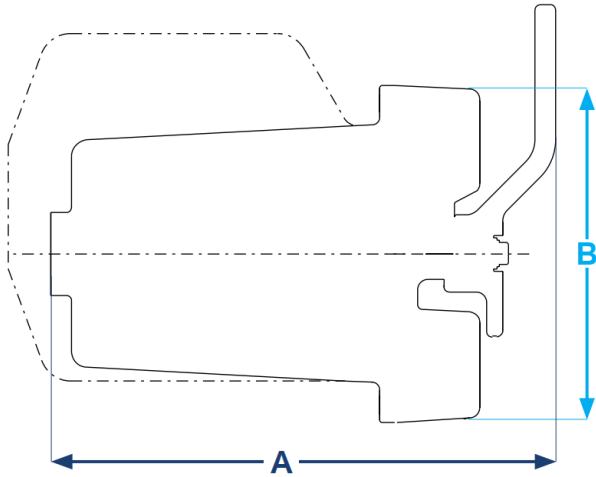
- Integral cycle timer
- Remote control panel
- Insulating jacket
- Actuator heater



# Drip Trap Electrically Actuated

## MODEL #8490

### SPECIFICATIONS



Size Quart (Liter)	A Length Inches (mm)	B Height Inches (mm)	Assembly Weight LBS (KG)
3 (2.8)	13 (330)	8.5 (216)	20 (9)
6 (5.7)	14 (356)	8.5 (216)	645 (293)

### HOW TO ORDER

<p><b>M ODEL #</b></p> <p><input type="checkbox"/><input type="checkbox"/><input type="checkbox"/><input type="checkbox"/></p> <p>↓</p> <p>8490</p>	<p><b>CAPACITY</b></p> <p><input type="checkbox"/></p> <p>↓</p> <p>2 = 3 Quarts 3 = 6 Quarts</p>	<p><b>MATERIAL</b></p> <p><input type="checkbox"/><input type="checkbox"/></p> <p>→ Seat: B = Buna-N N = Neoprene</p> <p>→ Body: 1 = Aluminum</p>	<p><b>Timer</b></p> <p><input type="checkbox"/><input type="checkbox"/></p> <p>↓</p> <p>00 = No Timer IT = Intagrated Timer P1 = Control Panel w/1 Trap P2 = Control Panel w/2 Traps N1 = NEMA 7 Control Panel w/1 Traps N2 = NEMA 7 Control Panel w/2 Traps</p>	<p><b>MAWP</b></p> <p><input type="checkbox"/><input type="checkbox"/></p> <p>↓</p> <p>A = 5 psig B = 25 psig C = 60 psig</p>	<p><b>JACKET</b></p> <p><input type="checkbox"/></p> <p>↓</p> <p>0 = No Jacket 1 = Jacket Included</p>
---	--	---	--	---	--

Notes:

- Include model number when ordering