
OVERVIEW

The GROTH BIOGAS Model 8460 Manual Drip Trap may be easily attached to a GROTH BIOGAS Sediment Trap for extra efficiency or installed for collection and safe removal of liquids from low points in gas control lines. The GROTH BIOGAS Model 8460 is a manually operated drip trap design for pressures up to 60 psig.

TECHNICAL DETAILS

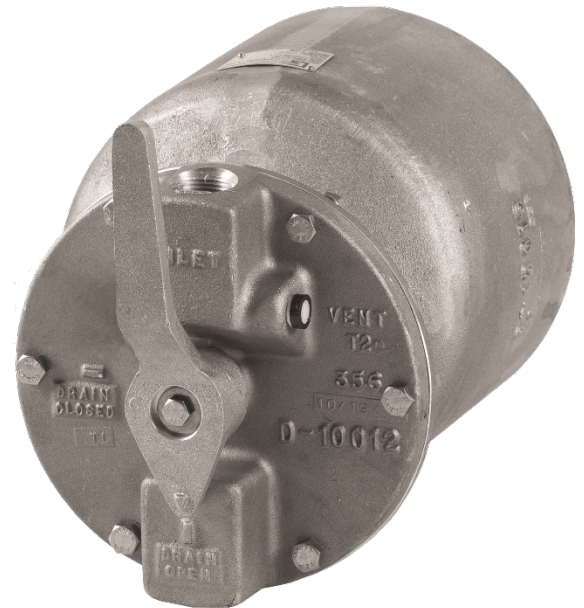
- Size: Standard with 1" NPT connection
- Material: Aluminum body with Stainless Steel internal working parts
- Maximum working pressure of 5 psig to 60 psig
- Capacity of 3 or 6 Quarts

FEATURES

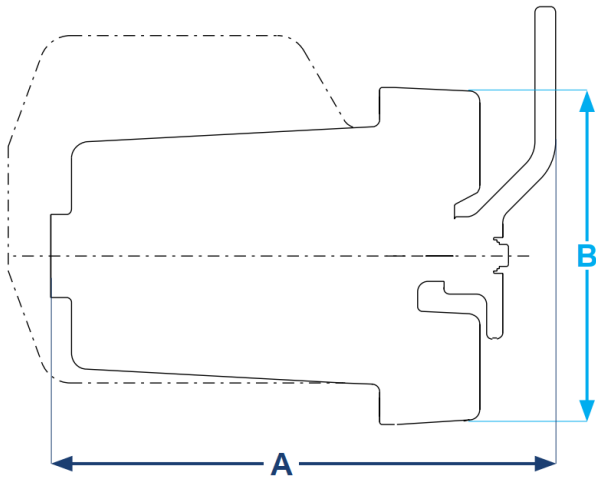
- Powerful, reliable shut-off action
- Manual Design
- No gas escapes when draining

OPTIONS

- Insulation Jacket

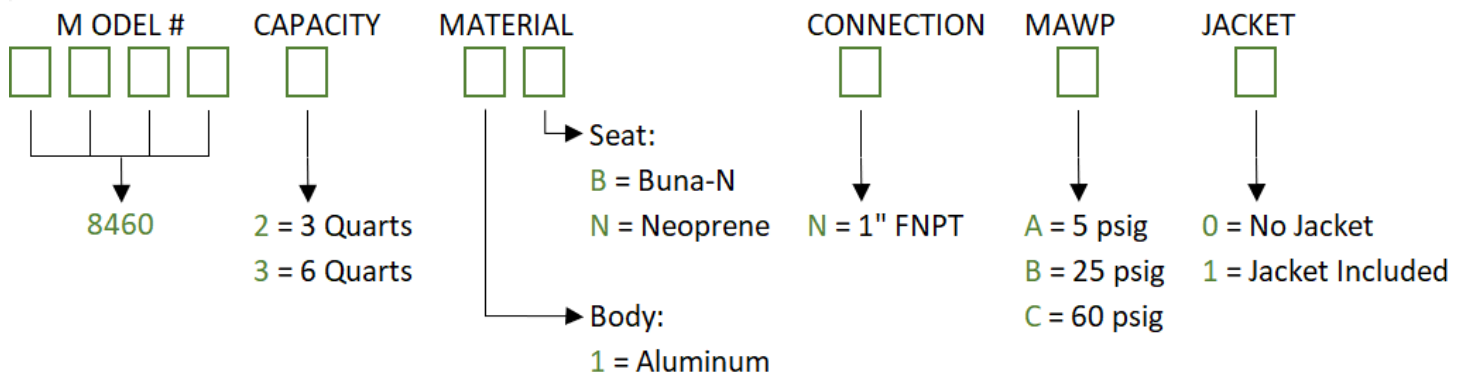


SPECIFICATIONS



Size Quart (Liter)	A Length Inches (mm)	B Height Inches (mm)	Assembly Weight LBS (KG)
3 (2.8)	13 (330)	8.5 (216)	20 (9)
6 (5.7)	14 (356)	8.5 (216)	645 (293)

HOW TO ORDER



Notes:

- Include model number when ordering