



Drip Trap Automatic Float Style

MODEL #8450

OVERVIEW

The GROTH BIOGAS Model 8450 Drip Traps are easily attached to a GROTH BIOGAS Sediment Trap for extra efficiency or for collection and safe removal of liquids from low points in gas control lines. The GROTH BIOGAS Model 8450 is an automatic drip trap design with a unique float operated valve.

TECHNICAL DETAILS

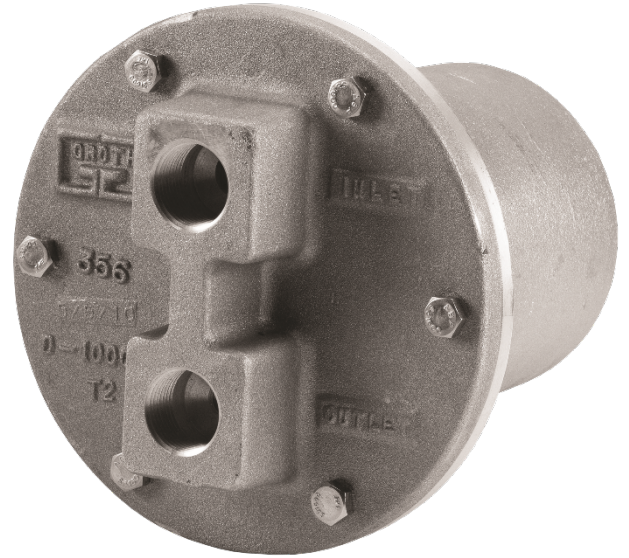
- Size: Standard with 1" NPT connection
- Material: Aluminum body with Stainless Steel internal working parts
- Maximum working pressure of 5 psig to 60 psig

FEATURES

- Powerful, reliable shut-off action
- Unique float operated valve with self-aligning spherical seat
- Extra-large discharge port reduces clogging
- Removable bowl design for easy maintenance
- Non-sticking fluoropolymer bearing

OPTIONS

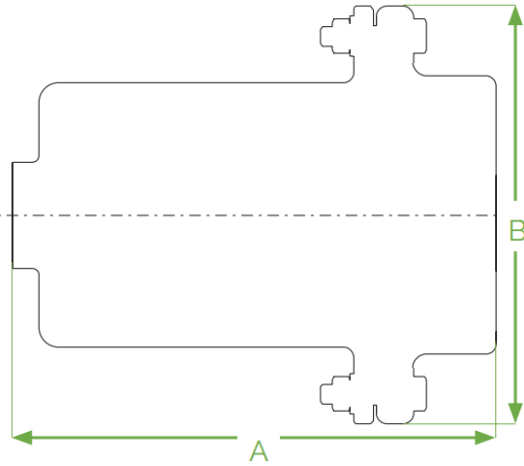
- Insulation Jacket



Drip Trap Automatic Float Style

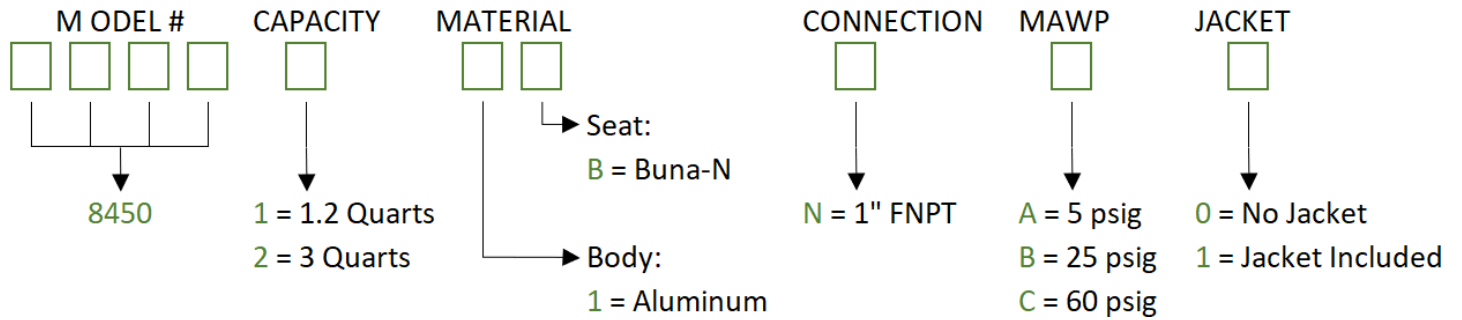
MODEL #8450

SPECIFICATIONS



Size Quart (Liter)	A Length Inches (mm)	B Height Inches (mm)	Assembly Weight LBS (KG)
1.2 (1.1)	9.5 (241)	7.88 (200)	20 (9)

HOW TO ORDER



Notes:

- Include model number when ordering