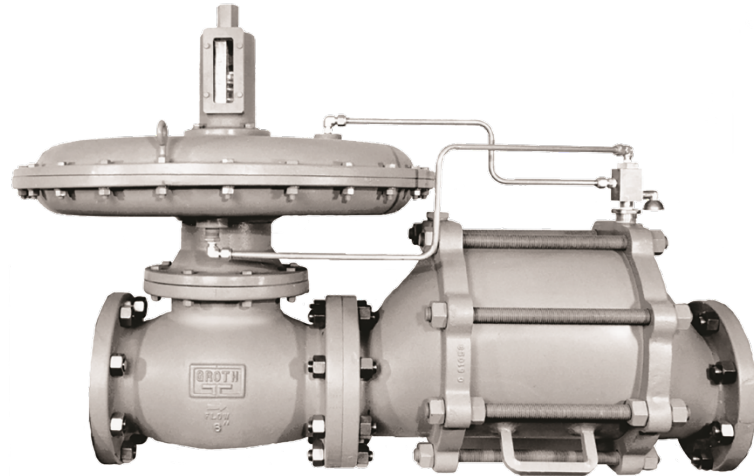


Pressure Regulator and Flame Trap

MODEL #8400

OVERVIEW

The GROTH BIOGAS Model 8400 Pressure Regulator and Flame Trap Assembly accomplishes two purposes. It will maintain a predetermined back pressure in order that only surplus gas is flared, and it inhibits a possible flame flashback of the flare into the gas control system. A fusible element that is rated at 260 F precludes valve shut-off unless contacted by flame. The visual indicator provides the operator with easy adjustments. The proven spiral wound, crimped ribbon flame element provides the best flame quenching performance with the least pressure drop.



TECHNICAL DETAILS

- Size: 2" (DN 50) through 12" (DN 300)
- Material: Aluminum
- Standard operating range is 2 to 12 INWC
- Max Working Pressure 10 psig / 0.689 barg

FEATURES

- Simple upstream pressure regulation allows for accurate pressure relief
- Adjustable set pressure for easy process pressure regulation adjustment
- Prevents pipeline deflagration from damaging tanks, pipelines, and other process equipment
- Corrosion Resistant throughout

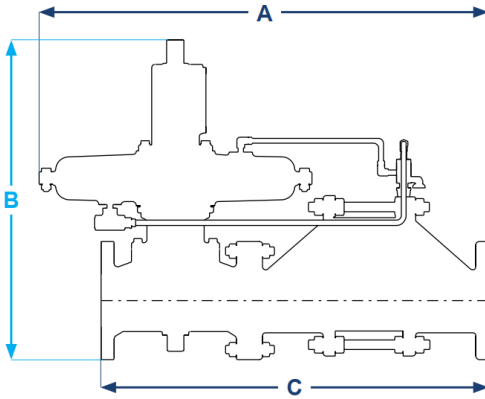
OPTIONS

- Drain connection
- Drip trap connection
- Insulation jacket
- Thermocouple/thermowell connection
- Flame check (vent line)
- Electronic shut-off
- Various spring ranges
- Special range of 8" to 24" is available when higher pressures are required
- Consult factory for 10 to 12 INWC for optional settings

Pressure Regulator and Flame Trap

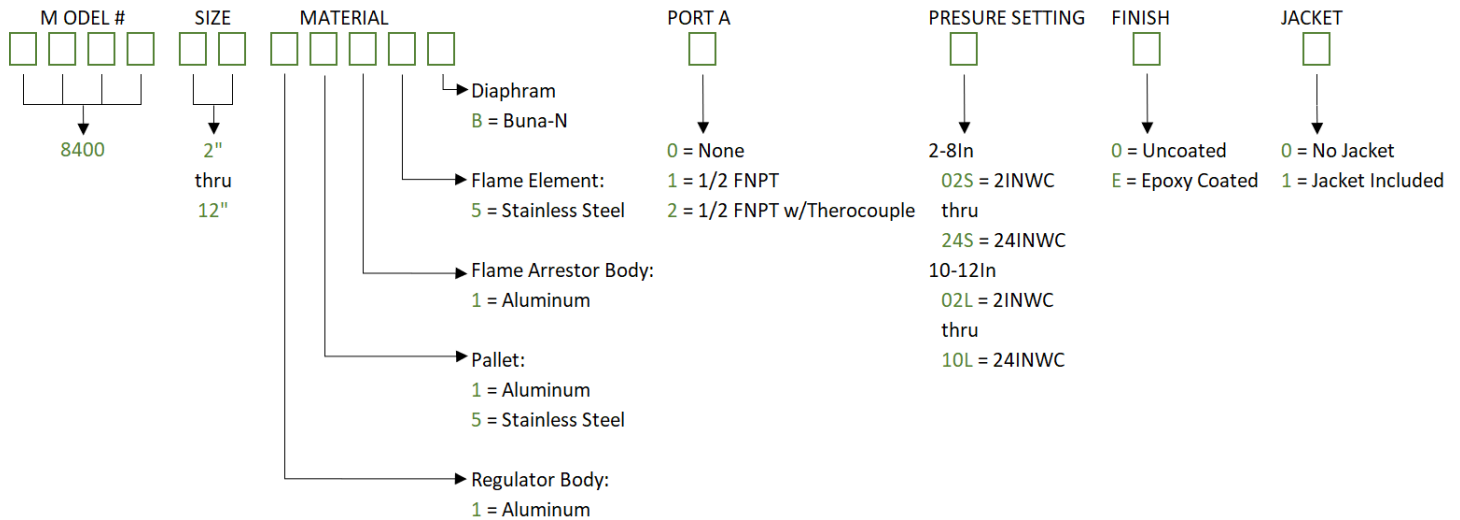
MODEL #8400

SPECIFICATIONS



| Size Inches (mm) | A Length Inches (mm) | B Height Inches (mm) | C Face to Face Inches (mm) | Assembly Weight LBS (KG) |
|------------------|----------------------|----------------------|----------------------------|--------------------------|
| 2 (50) | 28.69 (729) | 25 (635) | 22.81 (579) | 80 (36) |
| 3 (80) | 31.31 (795) | 26 (660) | 26.06 (662) | 100 (45) |
| 4 (100) | 34.25 (870) | 27 (686) | 29.69 (754) | 150 (68) |
| 6 (150) | 41.81 (1062) | 32.25 (819) | 36.06 (916) | 200 (91) |
| 8 (200) | 50.06 (1272) | 33.5 (851) | 47.94 (1218) | 300 (136) |
| 10 (250) | 55.75 (1416) | 47.75 (1213) | 55.75 (1416) | 645 (293) |
| 12 (300) | 67.38 (1711) | 50.75 (1289) | 67.38 (1711) | 795 (361) |

HOW TO ORDER



Notes:

- Include model number when ordering