

# Sediment Trap

## MODEL #8330

---

### OVERVIEW

The GROTH BIOGAS Model 8330 Sediment Trap is for use in low pressure gas lines to remove sediment and/or condensate from "wet" gas. These traps are normally installed to provide additional safety by removing almost all the solids and liquids from the gas stream. GROTH BIOGAS's design creates a combination of internal centrifugal force and a drop in gas velocity to successfully remove liquids and solids.

---

### TECHNICAL DETAILS

- Sizes: 2" (DN50) to 12" (DN300)
- Materials: Carbon Steel or Stainless Steel
- Capacity 12 gallons minimum
- Pressure: rated to 5 psig or 25 psig available

---

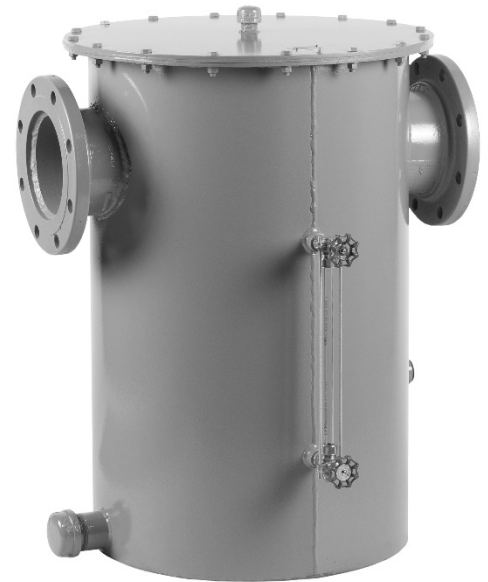
### FEATURES

- Indoor or outdoor service

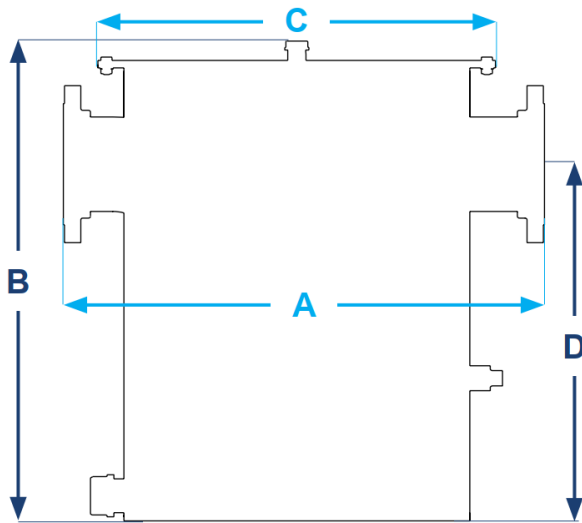
---

### OPTIONS

- Drip Trap
- Sight Glass
- Insulated jacket



**SPECIFICATIONS**



Size Inches (mm)	A Length Inches (mm)	B Height Inches (mm)	C Width Inches (mm)	D Connection Height Inches (mm)	Assembly Weight LBS (KG)
2 (50)	27 (685)	33.75 (857)	23 (584)	25 (635)	200 (91)
3 (80)	27 (685)	33.75 (857)	23 (584)	25 (635)	210 (95)
4 (100)	27 (685)	33.75 (857)	23 (584)	25 (635)	220 (100)
6 (150)	27 (685)	33.75 (857)	23 (584)	25 (635)	275 (125)
8 (200)	38 (965)	35.75 (908)	33 (838)	25 (635)	375 (170)
10 (250)	38 (965)	35.75 (908)	33 (838)	25 (635)	395 (180)
12 (300)	38 (965)	35.75 (908)	33 (838)	25 (635)	425 (193)

**HOW TO ORDER**

MODEL #	SIZE	MATERIAL	FINISH	MAWP	Drip Trap	SIGHT GALSS	JACKET
<input type="checkbox"/> <input type="checkbox"/> <input type="checkbox"/> <input type="checkbox"/>	<input type="checkbox"/> <input type="checkbox"/>	<input type="checkbox"/>	<input type="checkbox"/>	<input type="checkbox"/> <input type="checkbox"/>	<input type="checkbox"/>	<input type="checkbox"/>	<input type="checkbox"/>
↓	↓	↓	↓	↓	↓	↓	↓
8330	02" thru 12"	Body: 3 = Carbon Steel 5 = Stainless Steel	0 = Uncoated E = Epoxy Coated G = Hot-Dip Galvanize	05 = 5 psig 25 = 25 psig	0 = No 1 = 8450 1.2 Qt 2 = 8460 3 Qt 3 = 8460 6 Qt 4 = 8470 3 Qt 5 = 8470 6 Qt	0 = No Sight Glass 1 = Sight Glass Included	0 = No Jacket 1 = Jacket Included

Notes:

- Include model number when ordering