

# Deflagration Flame Arrester / Flame Check

## MODEL #7622

---

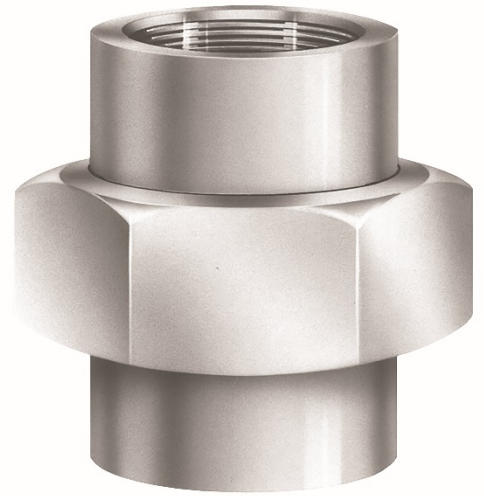
### OVERVIEW

The GROTH BIOGAS Model 7622 is a Deflagration Flame Arrester / Flame Check designed to prevent flashback in small lines carrying flammable gases. They are often used in small pilot lines and are intended for use where the gas flow can be shut off. The units are union type fittings with FNPT connections.

---

### TECHNICAL DETAILS

- Sizes 0.5" through 2"
- Housing standard material: carbon steel or stainless steel
- Flame element standard material: stainless steel
- Operational Temperature Range -4 to 140 °F (-20 to 60 °C)
- Good for IEC gas group IIB3 (MESG > 0.65 mm)
- Pre-Ignition system pressure up to 23.2 psia (1.60 bara)



---

### FEATURES

- Flame element has sufficient openings to provide a minimum pressure drop and still prevent flashback in the line
- Flame element consists of mesh and chemically etched plates
- Modular design allows easy access for inspection and maintenance

---

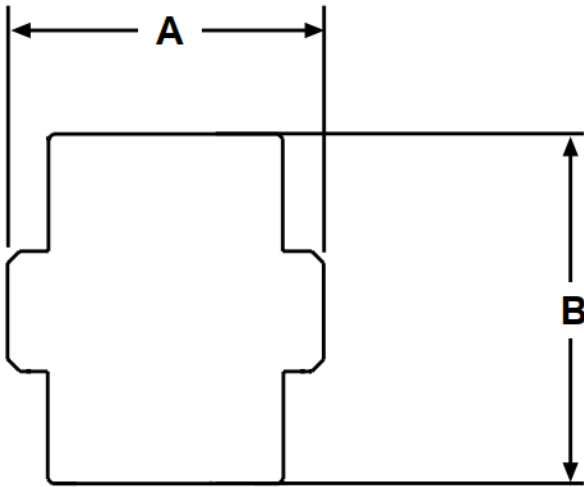
### OPTIONS

- AMSE 150# and PN 10/16 flanging.

# Deflagration Flame Arrester / Flame Check

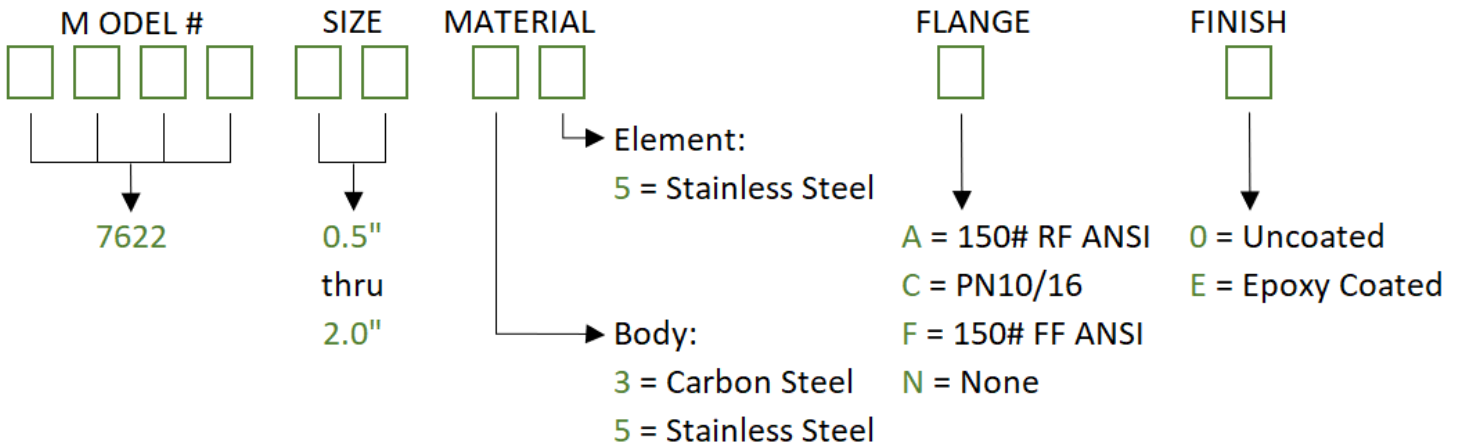
## MODEL #7622

### SPECIFICATIONS



Size FNPT Inch (mm)	A Width Inches (mm)	B Height Inches (mm)	Assembly Weight Aluminum LBS (KG)
0.50 (13)	1.61 (40.1)	1.63 (41.4)	0.37 (0.17)
0.75 (19)	1.93 (49.0)	1.85 (47.0)	0.53 (0.24)
1.00 (25)	2.28 (57.9)	1.97 (50.0)	0.85 (0.39)
1.50 (38)	3.01 (76.5)	2.28 (57.9)	1.56 (0.71)
2.00 (51)	3.62 (92.0)	2.48 (63.0)	2.37 (1.08)

### HOW TO ORDER



Notes:

- Include model number when ordering
- For special options, consult factory