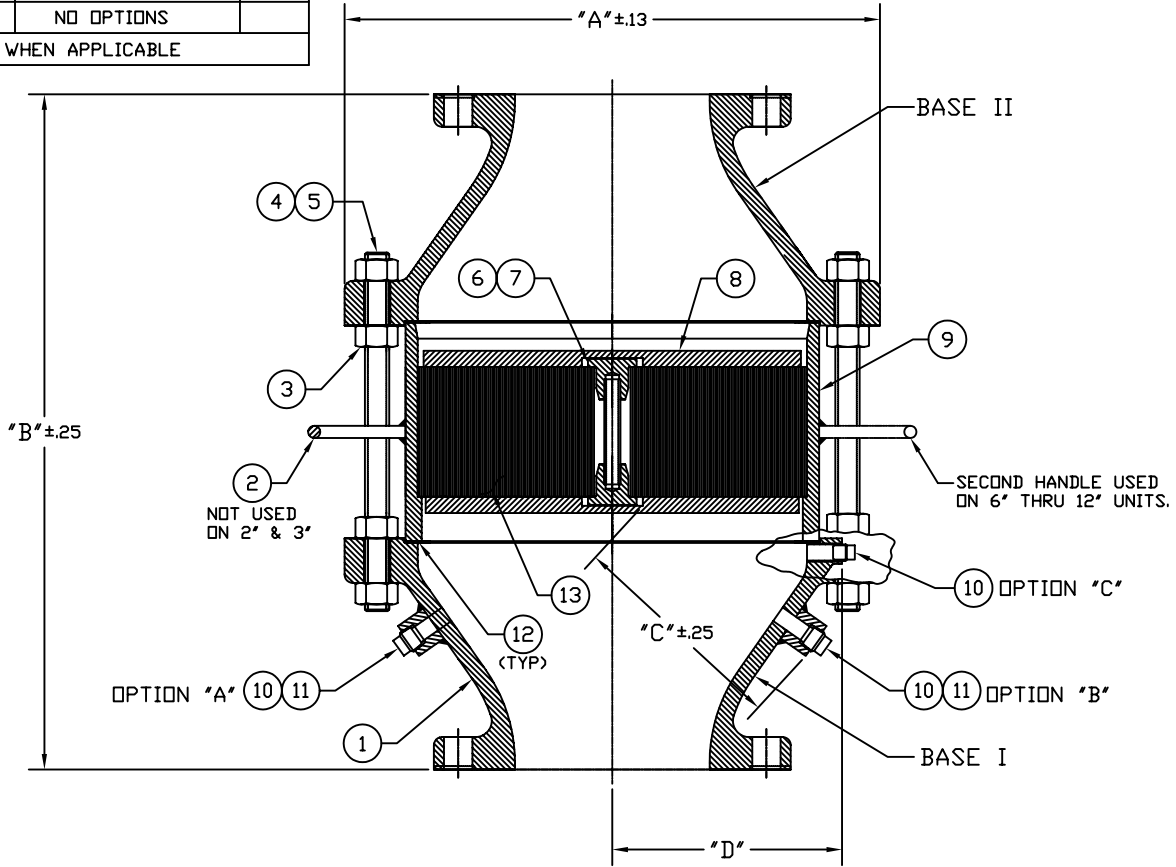


PORT CONNECTIONS			
BASE	LOCATION	DESCRIPTION	THD
	A	THERMOCOUPLE	
	B	PRESSURE TAP	
	C	DRAIN PORT	
	D	NO OPTIONS	

CHECK WHEN APPLICABLE

MODEL 7618  
VERTICAL  
FLAME ARRESTER



**NOTES:**

1. SEE DWG C-92796 FOR ANSI 150 & ALTERNATE DRILLING PATTERNS.

INSTRUMENT & DRAIN PORT CONNECTION								
THRD SIZE	DRILL $\phi$		OPT "A"	OPT "B"	OPT "C"			
	In.	mm						
1/4"-18 NPT	.438	11	2" - 12"	2" - 12"	2" - 12"			
1/2"-14 NPT	.703	18	2" - 12"	2" - 12"	2" - 12"			
3/4"-14 NPT	.906	23	2" - 12"	2" - 12"	6" - 12"			
1"-11 NPT	1.141	29	2" - 12"	2" - 12"	8" - 12"			
SIZE	A		B		C		D	
	In.	mm	In.	mm	In.	mm	In.	mm
2"	8.75	222	14.00	356	5.06	129	3.06	78
3"	9.50	241	16.00	406	5.75	146	3.59	91
4"	11.50	292	18.25	464	6.25	159	4.59	117
6"	16.50	419	21.00	533	7.06	179	6.63	168
8"	21.00	533	25.00	635	8.03	204	8.50	216
10"	24.75	629	30.00	762	10.63	270	10.75	273
12"	28.63	727	32.50	826	11.81	300	12.69	322

TAGS AND SPECIFICATIONS

THIS DRAWING EMBODIES A CONFIDENTIAL PROPRIETARY DESIGN ORIGINATED BY GROTH CORPORATION, AND ALL DESIGN, MANUFACTURING, REPRODUCTION, USE AND SALE RIGHTS, REGARDING THE SAME ARE EXPRESSLY RESERVED. IT IS SUBMITTED UNDER A CONFIDENTIAL RELATIONSHIP FOR A SPECIFIED PURPOSE, AND THE RECIPIENT AGREES BY ACCEPTING THIS DRAWING NOT TO SUPPLY OR DISCLOSE ANY INFORMATION REGARDING IT TO ANY UNAUTHORIZED PERSONS OR TO INCORPORATE IN OTHER PROJECTS ANY SPECIAL FEATURES PECULIAR TO THIS DESIGN. ALL PATENTS RIGHTS HERETO ARE EXPRESSLY RESERVED BY GROTH CORPORATION, 1202 HAHLO, HOUSTON, TEXAS 77020

REV.	DATE	BY	ECN NO.
B	01-23-97	ESQ	97013
C	06-20-97	ESQ	97059
D	08-23-01	MP	10276



GROTH CORPORATION  
a Continental Disc Company

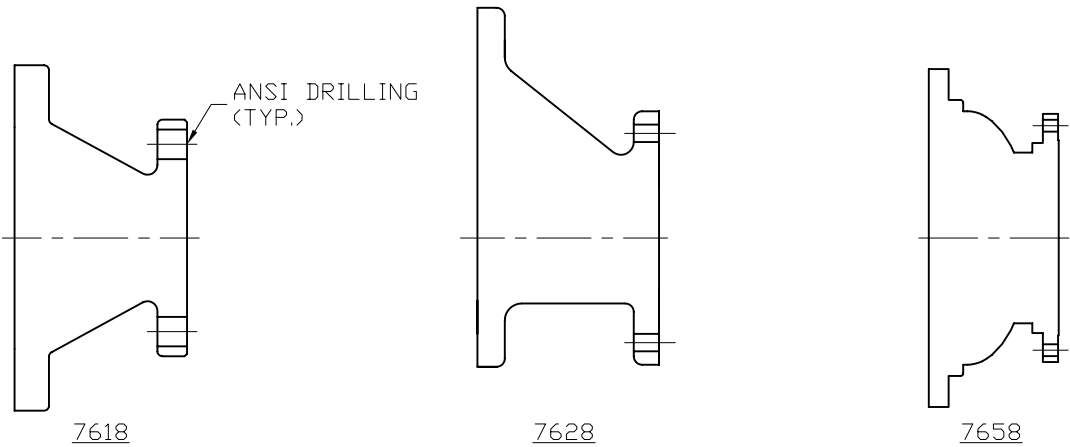
APPROVED BY:  
DATE:

CHECKED BY:  
DATE:

DWG. NO. : C-84501  
DWN BY: ES QUINTERO

NOTE: (1.) MODEL 7658A IS ONLY MODEL AVAILABLE WITH 1" FLANGE CONNECTION.

FLAME ARRESTER  
FLANGE DRILLING DIMENSION TABLES  
ANSI/CLASS 150 & ALTERNATE DRILLING



DRILLED HOLE PATTERNS

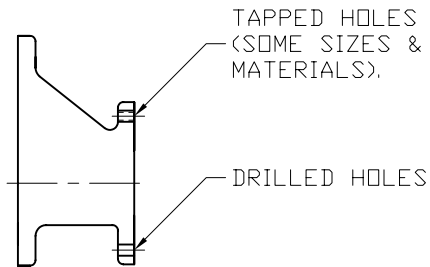
SIZE	FLANGE DRILLING	HOLE DIA.		NO. OF HOLES	BOLT CIRCLE DIA.	
		in	mm		in	mm
1"	ANSI 150	.63	16	4	3.13	80
2"	ANSI 150	.75	19	4	4.75	121
3"	ANSI 150	.75	19	4	6.00	152
4"	ANSI 150	.75	19	8	7.50	191
6"	ANSI 150	.88	22	8	9.50	241
8"	ANSI 150	.88	22	8	11.75	298
10"	ANSI 150	1.00	25	12	14.25	362
12"	ANSI 150	1.00	25	12	17.00	432
14"	ANSI 150	1.13	29	12	18.75	476
16"	ANSI 150	1.13	29	16	21.25	540
18"	ANSI 150	1.25	32	16	22.75	578
20"	ANSI 150	1.25	32	20	25.00	635
24"	ANSI 150	1.38	35	20	29.50	749
30"	CLASS 150	.88	22	44	33.31	846
36"	CLASS 150	1.00	25	44	39.75	1010

SIZE	FLANGE DRILLING	HOLE DIA.		TAPPED HOLE	NO. OF HOLES	BOLT CIRCLE DIA.	
		in	mm			in	mm
1"	JIS 10K	.75	19	M16 x 2.0-6H	4	3.54	90
2"	JIS 10K	.75	19	M16 x 2.0-6H	4	4.72	120
3"	JIS 10K	.75	19	M16 x 2.0-6H	8	5.91	150
4"	JIS 10K	.75	19	M16 x 2.0-6H	8	6.89	175
6"	JIS 10K	.91	23	M20 x 2.5-6H	8	9.45	240
8"*	JIS 10K	.91	23	M20 x 2.5-6H	12	11.42	290
10"*	JIS 10K	.98	25	M22 x 2.5-6H	12	13.98	355
12"*	JIS 10K	.98	25	M22 x 2.5-6H	16	15.75	400

\* NOT APPLICABLE TO 7658A

SIZE	FLANGE DRILLING	HOLE DIA.		TAPPED HOLE	NO. OF HOLES	BOLT CIRCLE DIA.	
		in	mm			in	mm
1"	PN 10	.55	14	M12 x 1.75-6H	4	3.35	85
2"	PN 10	.71	18	M16 x 2.0-6H	4	4.92	125
3"	PN 10	.71	18	M16 x 2.0-6H	8	6.30	160
4"	PN 10	.71	18	M16 x 2.0-6H	8	7.09	180
6"	PN 10	.87	22	M20 x 2.5-6H	8	9.45	240
8"*	PN 10	.87	22	M20 x 2.5-6H	8	11.61	295
10"*	PN 10	.87	22	M20 x 2.5-6H	12	13.78	350
12"*	PN 10	.87	22	M20 x 2.5-6H	12	15.75	400

\* NOT APPLICABLE TO 7658A



SIZE	FLANGE DRILLING	HOLE DIA.		TAPPED HOLE	NO. OF HOLES	BOLT CIRCLE DIA.	
		in	mm			in	mm
1"	PN 16	.55	14	M12 x 1.75-6H	4	3.35	85
2"	PN 16	.71	18	M16 x 2.0-6H	4	4.92	125
3"	PN 16	.71	18	M16 x 2.0-6H	8	6.30	160
4"	PN 16	.71	18	M16 x 2.0-6H	8	7.09	180
6"	PN 16	.87	22	M20 x 2.5-6H	8	9.45	240
8"	PN 16	.87	22	M20 x 2.5-6H	12	11.61	295
10"	PN 16	1.02	26	M24 x 3.0-6H	12	13.98	355
12"	PN 16	1.02	26	M24 x 3.0-6H	12	16.14	410

THIS DRAWING EMBODIES A CONFIDENTIAL PROPRIETARY DESIGN ORIGINATED BY GROTH CORPORATION, AND ALL DESIGN, MANUFACTURING, REPRODUCTION, USE AND SALE RIGHTS, REGARDING THE SAME ARE EXPRESSLY RESERVED. IT IS SUBMITTED UNDER A CONFIDENTIAL RELATIONSHIP FOR A SPECIFIED PURPOSE, AND THE RECIPIENT AGREES BY ACCEPTING THIS DRAWING NOT TO SUPPLY OR DISCLOSE ANY INFORMATION REGARDING IT TO ANY UNAUTHORIZED PERSONS OR TO INCORPORATE IN OTHER PROJECTS ANY SPECIAL FEATURES PECULIAR TO THIS DESIGN. ALL PATENTS RIGHTS HERETO ARE EXPRESSLY RESERVED BY GROTH CORPORATION, 13650 N. PROMENADE, STAFFORD, TEXAS 77477

REV.	DATE	BY	ECN NO.
A	05/29/02	MP	10390



GROTH CORPORATION  
a Continental Disc Company

APPROVED BY:	CHECKED BY:	DWG. NO. : C-92796
DATE:	DATE:	DWN BY: MP

**MODEL 7618**

**BILL OF MATERIAL**

ITEM	DESCRIPTION	STANDARD MATERIALS OF CONSTRUCTION			OPTIONAL FEATURES
		ALUMINUM <input type="checkbox"/>	CARBON STL <input type="checkbox"/>	316 SS <input type="checkbox"/>	
1	BASE	ALUM GR 356 T6	CS WCB	CF-8M (316 SS)	<input type="checkbox"/>
2	HANDLE	ALUM	CS	SS	<input type="checkbox"/>
3	NUT, SPREADER (HEX)	SS	SS	SS	<input type="checkbox"/>
4	NUT, HEX	SS	SS	SS	<input type="checkbox"/>
5	STUD	SS	SS	SS	<input type="checkbox"/>
6	PLUG, ELEMENT	SS	SS	303 SS	<input type="checkbox"/>
7	ROD, ELEMENT	SS	SS	316 SS	<input type="checkbox"/>
8	GRID, ELEMENT	ALUM	316 SS	316 SS	<input type="checkbox"/>
9	HOUSING, ELEMENT	ALUM	CS	316 SS	<input type="checkbox"/>
10	PLUG, PLUG (OPTIONAL)	ALUM	CS	316 SS	<input type="checkbox"/>
11	COUPLING (OPTIONAL)	ALUM	CS	316 SS	<input type="checkbox"/>
12	* GASKET	NON-ASB	NON-ASB	NON-ASB	<input type="checkbox"/>
13	ELEMENT, FLAME	ALUM (1)	316 SS	316 SS	<input type="checkbox"/>

\* SPARE PARTS

(1) Available in 316 SS

DWG. NUMBER:  
BOM NUMBER:

C-84501  
84501BOM.XLS

Rev. A

