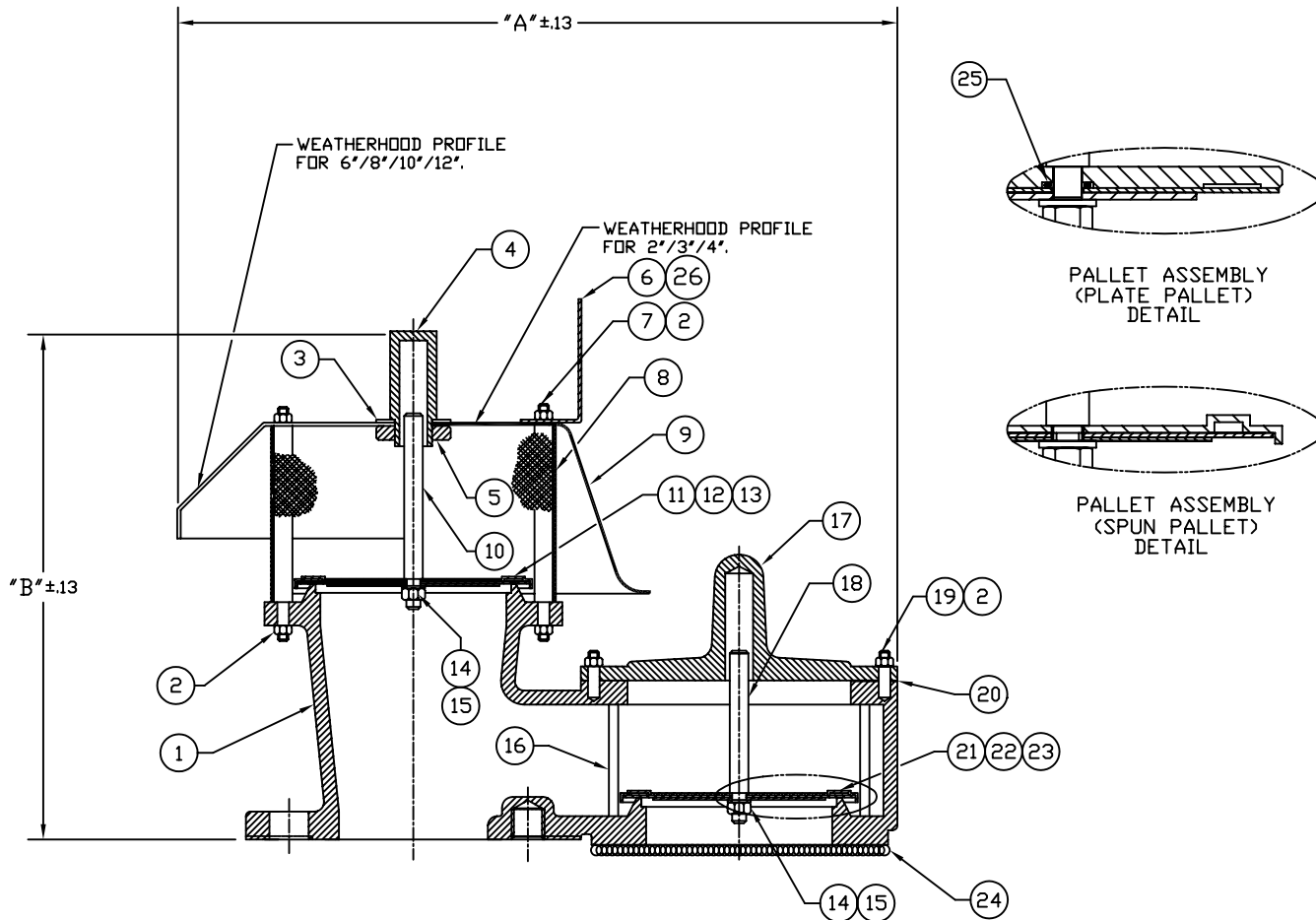


MODEL 1200A
PRESSURE/VACUUM RELIEF VENT
WEIGHT LOADED



NOTES:

1. "C" DIMENSION (NOT SHOWN) IS MAX. WIDTH.
2. SEE DWG C-92526 FOR ANSI, PN10/PN16 & JIS10K DRILLING PATTERNS.

SIZE	A		B		C	
	in	mm	in	mm	in	mm
2"	13.63	346	13.00	330	9.50	241
3"	18.00	457	13.63	346	11.50	292
4"	19.75	501	15.81	401	13.00	330
6"	27.75	704	22.19	563	19.00	482
8"	33.81	858	26.38	669	23.63	600
10"	40.88	1038	28.88	733	30.75	781
12"	46.00	1168	32.88	835	36.00	914

TAGS AND SPECIFICATIONS

THIS DRAWING EMBODIES A CONFIDENTIAL PROPRIETARY DESIGN ORIGINATED BY GROTH CORPORATION, AND ALL DESIGN, MANUFACTURING, REPRODUCTION, USE AND SALE RIGHTS, REGARDING THE SAME ARE EXPRESSLY RESERVED. IT IS SUBMITTED UNDER A CONFIDENTIAL RELATIONSHIP FOR A SPECIFIED PURPOSE, AND THE RECIPIENT AGREES BY ACCEPTING THIS DRAWING NOT TO SUPPLY OR DISCLOSE ANY INFORMATION REGARDING IT TO ANY UNAUTHORIZED PERSONS OR TO INCORPORATE IN OTHER PROJECTS ANY SPECIAL FEATURES PECULIAR TO THIS DESIGN. ALL PATENTS RIGHTS HERETO ARE EXPRESSLY RESERVED BY GROTH CORPORATION, 1202 HAHLO, HOUSTON, TEXAS 77020

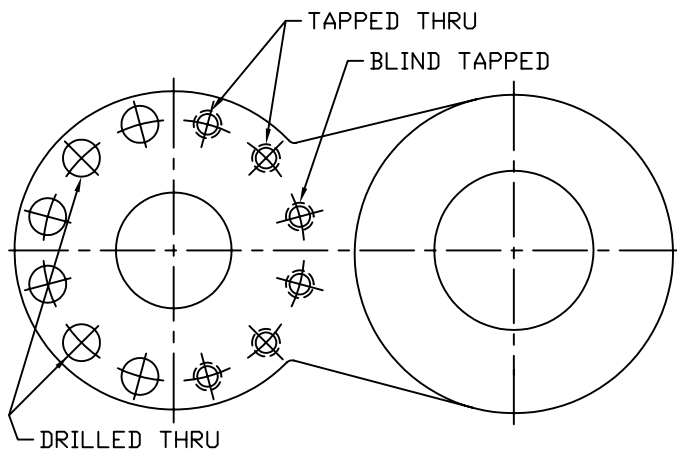
REV.	DATE	BY	ECN NO.
A	08-22-01	ESQ	10276



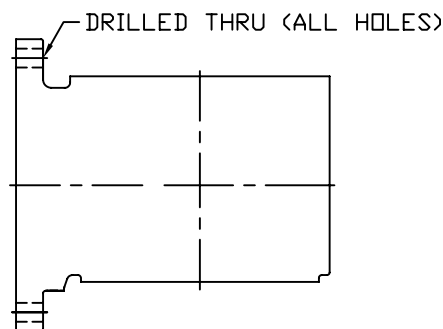
GROTH CORPORATION
a Continental Disc Company

APPROVED BY:	CHECKED BY:	DWG. NO. : C-92525
DATE:	DATE:	DWN BY: ES QUINTERO

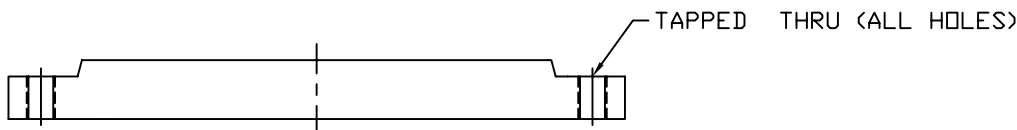
1200A SERIES
FLANGE DRILLING DIMENSION TABLES
(ANSI 150#, DIN PN10/16, JIS 10K)



INLET FLANGE
(VIEWED FROM BOTTOM)
MODELS: 1200A, 1220A, 1300A
1201B, 1221B, 1301A



OUTLET FLANGE
MODELS: 1220A, 1260A, 1360A
1221B, 1261A, 1361A



BODY
MODELS: 2300A & 2301A

DRILLED HOLES

SIZE	FLANGE DRILLING	HOLE DIA.		TAPPED HOLE	NO. OF HOLES	BOLT CIRCLE DIA.	
		in	mm			in	mm
2"	ANSI 150#	.75	19	5/8-11 UNC-2B	4	4.75	121
3"	ANSI 150#	.75	19	5/8-11 UNC-2B	4	6.00	152
4"	ANSI 150#	.75	19	5/8-11 UNC-2B	8	7.50	191
6"	ANSI 150#	.88	22	3/4-10 UNC-2B	8	9.50	241
8"	ANSI 150#	.88	22	3/4-10 UNC-2B	8	11.75	298
10"	ANSI 150#	1.00	25	7/8-9 UNC-2B	12	14.25	362
12"	ANSI 150#	1.00	25	7/8-9 UNC-2B	12	17.00	432
14"	ANSI 150#	1.13	29	1 -12 UNC-2B	12	18.75	476

SIZE	FLANGE DRILLING	HOLE DIA.		TAPPED HOLE	NO. OF HOLES	BOLT CIRCLE DIA.	
		in	mm			in	mm
2"	JIS 10K	.75	19	M16 x 2.0-6H	4	4.72	120
3"	JIS 10K	.75	19	M16 x 2.0-6H	8	5.91	150
4"	JIS 10K	.75	19	M16 x 2.0-6H	8	6.89	175
6"	JIS 10K	.91	23	M20 x 2.5-6H	8	9.45	240
8"	JIS 10K	.91	23	M20 x 2.5-6H	12	11.42	290
10"	JIS 10K	.98	25	M22 x 2.5-6H	12	13.98	355
12"	JIS 10K	.98	25	M22 x 2.5-6H	16	15.75	400
14"	JIS 10K	.98	25	M22 x 2.5-6H	16	17.52	445

SIZE	FLANGE DRILLING	HOLE DIA.		TAPPED HOLE	NO. OF HOLES	BOLT CIRCLE DIA.	
		in	mm			in	mm
2"	PN 10	.71	18	M16 x 2.0-6H	4	4.92	125
3"	PN 10	.71	18	M16 x 2.0-6H	8	6.30	160
4"	PN 10	.71	18	M16 x 2.0-6H	8	7.09	180
6"	PN 10	.87	22	M20 x 2.5-6H	8	9.45	240
8"	PN 10	.87	22	M20 x 2.5-6H	8	11.61	295
10"	PN 10	.87	22	M20 x 2.5-6H	12	13.78	350
12"	PN 10	.87	22	M20 x 2.5-6H	12	15.75	400
14"	PN 10	.87	22	M20 x 2.5-6H	16	18.11	460

SIZE	FLANGE DRILLING	HOLE DIA.		TAPPED HOLE	NO. OF HOLES	BOLT CIRCLE DIA.	
		in	mm			in	mm
2"	PN 16	.71	18	M16 x 2.0-6H	4	4.92	125
3"	PN 16	.71	18	M16 x 2.0-6H	8	6.30	160
4"	PN 16	.71	18	M16 x 2.0-6H	8	7.09	180
6"	PN 16	.87	22	M20 x 2.5-6H	8	9.45	240
8"	PN 16	.87	22	M20 x 2.5-6H	12	11.61	295
10"	PN 16	1.02	26	M24 x 3.0-6H	12	13.98	355
12"	PN 16	1.02	26	M24 x 3.0-6H	12	16.14	410
14"	PN 16	1.02	26	M24 x 3.0-6H	16	18.50	470

THIS DRAWING EMBODIES A CONFIDENTIAL PROPRIETARY DESIGN ORIGINATED BY GROTH CORPORATION, AND ALL DESIGN, MANUFACTURING, REPRODUCTION, USE AND SALE RIGHTS, REGARDING THE SAME ARE EXPRESSLY RESERVED. IT IS SUBMITTED UNDER A CONFIDENTIAL RELATIONSHIP FOR A SPECIFIED PURPOSE, AND THE RECIPIENT AGREES BY ACCEPTING THIS DRAWING NOT TO SUPPLY OR DISCLOSE ANY INFORMATION REGARDING IT TO ANY UNAUTHORIZED PERSONS OR TO INCORPORATE IN OTHER PROJECTS ANY SPECIAL FEATURES PECULIAR TO THIS DESIGN. ALL PATENTS RIGHTS HERETO ARE EXPRESSLY RESERVED BY GROTH CORPORATION, 1202 HAHLO, HOUSTON, TEXAS 77020

REV.	DATE	BY	ECN NO.
A	08-22-01	ESQ	10276



GROTH CORPORATION
a Continental Disc Company

APPROVED BY:	CHECKED BY:	DWG. NO. : C-92526
DATE:	DATE:	DWN BY: ESQUINTERO

MODEL 1200A

BILL OF MATERIAL

ITEM	DESCRIPTION	STANDARD MATERIALS OF CONSTRUCTION			OPTIONAL FEATURES
		ALUMINUM <input type="checkbox"/>	CARBON STL <input type="checkbox"/>	316 SS <input type="checkbox"/>	
1	BODY	AL GR 356 T6	CS WCB	CF-8M (316 SS)	
2	NUT, HEX	SS	SS	SS	
3	WASHER, FLAT	SS	SS	SS	
4	GUIDE, STEM	ALUM	CS	316 SS	
5	NUT, HEX JAM	SS	SS	SS	
6	LUG, LIFTING	GALV CS	GALV CS	GALV CS	
7	POST, WEATHERHOOD	316 SS	316 SS	316 SS	
8	SCREEN, PRESSURE	316 SS	316 SS	316 SS	
9	WEATHERHOOD	ALUM	CS	316 SS	
10	STEM, PRESSURE	316 SS	316 SS	316 SS	
11	PALLET, PRESSURE	316 SS	316 SS	316 SS	
12	* DIAPHRAGM, PRESSURE (1)	Teflon® FEP	Teflon® FEP	Teflon® FEP	
13	PLATE, RETAINER (PRESSURE)	316 SS	316 SS	316 SS	
14	WASHER, LOCK	SS	SS	SS	
15	NUT, HEX	SS	SS	SS	
16	ROD, GUIDE	316 SS	316 SS	316 SS	
17	COVER	AL GR 356 T6	CS WCB	CF-8M (316 SS)	
18	STEM, VACUUM	316 SS	316 SS	316 SS	
19	STUD	SS	SS	SS	
20	* GASKET, COVER	NON-ASB	NON-ASB	NON-ASB	
21	PALLET, VACUUM	316 SS	316 SS	316 SS	
22	* DIAPHRAGM, VACUUM (1)	Teflon® FEP	Teflon® FEP	Teflon® FEP	
23	PLATE, RETAINER (VACUUM)	316 SS	316 SS	316 SS	
24	SCREEN, VACUUM (OPTIONAL)	316 SS	316 SS	316 SS	
25	* O-RING, PLATE PALLET (2)	VITON	VITON	VITON	
26	WASHER, STAR	SS	SS	SS	
27	INSERT, SEAT (3) (NOT SHOWN)	N.A.	316 SS	N/A	
28	PALLET WEIGHT (4) (NOT SHOWN)	LEAD	LEAD	LEAD	

* SPARE PARTS

(1) Teflon® is a registered trademark of E.I. du Pont de Nemours and Co. used under license.

(2) ELASTOMERS ALSO AVAILABLE IN AFLAS, BUNA-N, EPR & KALREZ

(3) OPTIONAL SEAT: AL UNITS - BONDED; CS UNITS - WELDED

(4) AVAILABLE IN 316 SS; CONSULT FACTORY FOR ALT. MATERIALS.

DWG. NUMBER:
BOM NUMBER:

C-92525
92525bom.xls

REV. A



a Continental Disc Company